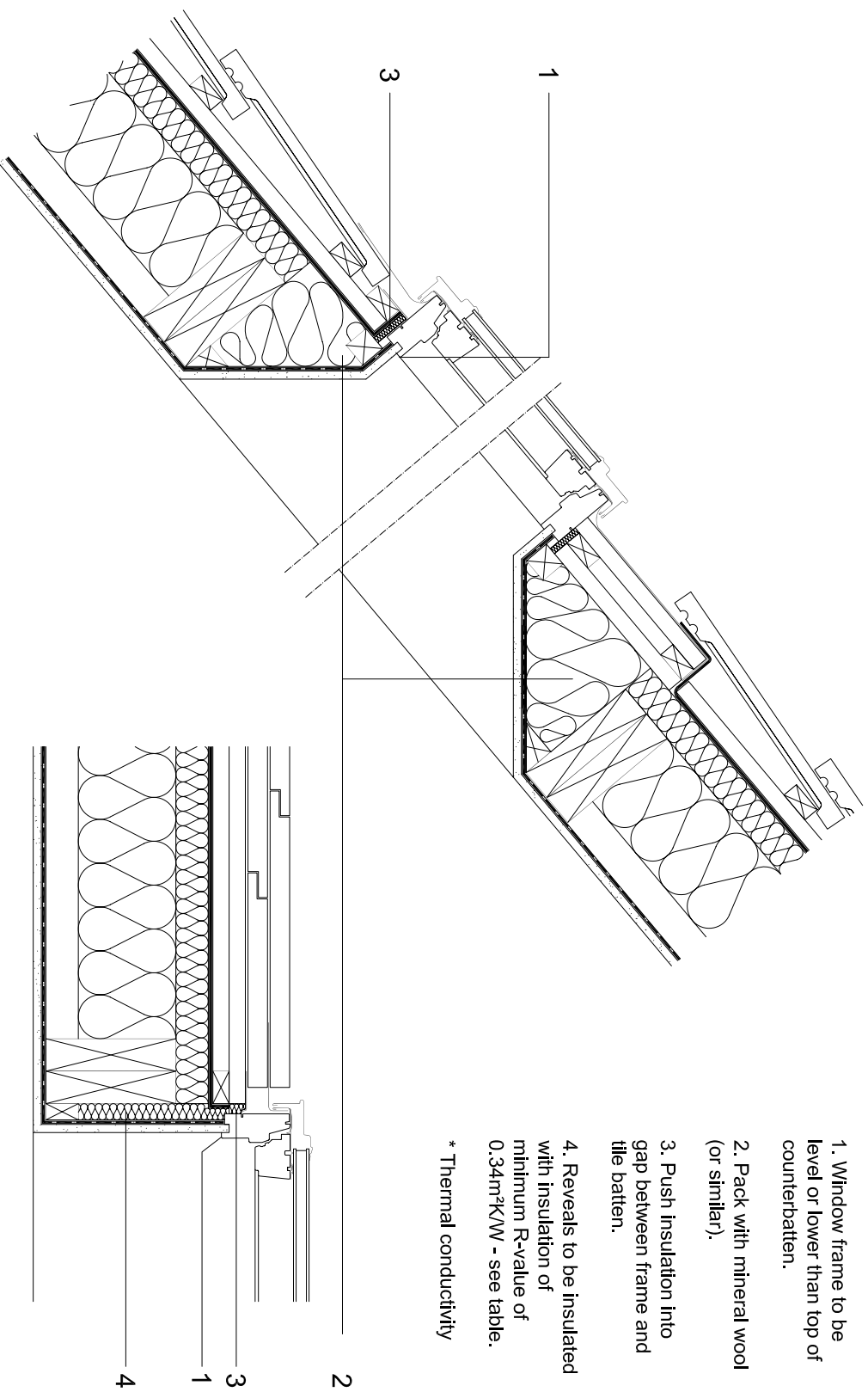


Notes

1. Window frame to be level or lower than top of counterbatten.
2. Pack with mineral wool (or similar).
3. Push insulation into gap between frame and tile batten.
4. Reveals to be insulated with insulation of minimum R-value of 0.34m²/KW - see table.

* Thermal conductivity



Detail A

Roof window. Ventilated batten void (warm roof).

Scale 1:10

To achieve R=0.34m ² /KW (note 4)	
λ^* (W/mK)	Thickness (mm)
0.020	7
0.025	9
0.030	10
0.035	12
0.040	14